

FILLS BELLEVUE KNEAD—

Nov - 15 - 1969

# Brenner Brothers Bakery Expands

BY DARRELL GLOVER

A new Brenner Brothers expanded bakery, restaurant and delicatessen operation opened its doors for business in Bellevue last Monday.

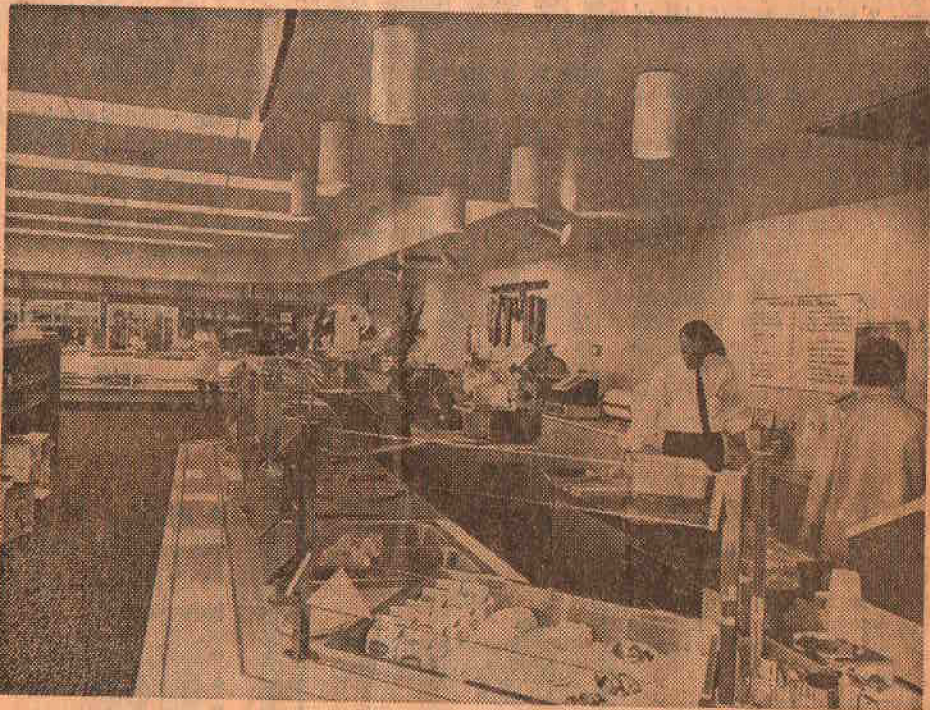
A new one-story 14,000-square foot building houses the bakery, the delicatessen, and restaurant with specialty sandwich and sales area.

Joe Brenner, one of the three brothers who own and operate the company, said a new oven in the bakery "increases the production by 20 per cent."

A second new oven will arrive after the first of the year, Brenner said, and will increase the production by 120 per cent.

Brenner Brothers Bakery began in Seattle in 1902 and was founded by Abe Brenner. Besides Joe, the late founder's other sons operating the company are Itsey and Charlie.

Cost of the land, building and new equipment in the new bakery was about



—P-I Photo.

BRENNER BROTHERS SPARKLING RESTAURANT SERVICE COUNTER, DELICATESSEN

CONTINUED ON PAGE 28

Entire facility is carpeted and features acoustical ceiling with recessed lighting